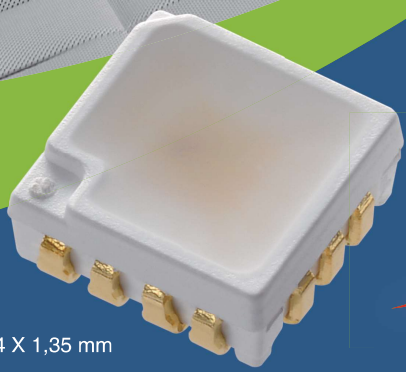


EVERLIGHT — AUTOMOTIVE





3,5 X 3,4 X 1,35 mm

| Color | Part No. | Typ Brightness (mcd) | Typ current (mA) | VF | CCT/ nm | Typical Rth K/W | Max Tj (°C) | Qualification |
|-------|-----------------------|----------------------|------------------|----|---------|-----------------|-------------|----------------|
| Red | EL3534-RGBISE0391L-AM | 410 | 12.5 | 5 | 620 | 120 | 125 | AEC-Q102_Rev_A |
| Green | | 880 | 9.5 | | 530 | | | |
| Blue | | 110 | 7 | | 468 | | | |
| White | | 1400 | 26 | | D65 | | | |
| Red | EL3534-RGBISE0401H-AM | 600 | 12.5 | 5 | 620 | 120 | 125 | |
| Green | | 1250 | 14.5 | | 530 | | | |
| Blue | | 150 | 9.5 | | 468 | | | |
| White | | 2000 | 34 | | D65 | | | |

GERMANY, KARLSRUHE

EVERLIGHT ELECTRONICS EUROPE GMBH
 Siemensallee 84, Building 7302, 5F
 76187 Karlsruhe, Germany
 TEL: +49-721-82447-3
 FAX: +49-721-82447-40
 EMAIL: info@everlight-eu.de

EVERLIGHT
 ————
AUTOMOTIVE

2024 Q4