

LAMP & ARRAY

Everlight provides a wide selection of indicator lights in various sizes, wavelengths, and brightness levels to meet diverse customer needs. We have 3mm, 5mm, circular, oval and square LED packages for all kinds of applications.

Applications: server/data center, home appliances, traffic signals, outdoor signage, industrial applications and electronic devices.

LED Lamps | 3mm Round Type

UNIT : mm

Product	Dimension (mm)	Color		Brightness			V _F			IF (mA)	Viewing Angle(°)
		Color	Wavelength nm / CIE	I _v (mcd) min.	I _v (mcd) typ.	I _v (mcd) max.	V _F (V) min.	V _F (V) typ.	V _F (V) max.		
204-10SUGC/S400-A5	3	Green	525	1600	3200	-	-	3.2	3.7	20	30
204-10SURD/S530-A3	3	Brilliant Red	624	40	80	-	1.7	2	2.4	20	45
204-15/FNC2-2TVA	3	White	x=0.26 y=0.27	7150	-	14250	2.8	-	3.6	20	25
204-10SUBD/S400-A4	3	Blue	470	400	800	-	-	3.4	4.0	20	20

LED Lamps | 5mm Round Type

Product	Dimension (mm)	Color		Brightness			V _F			IF (mA)	Viewing Angle(°)
		Color	Wavelength nm / CIE	I _v (mcd) min.	I _v (mcd) typ.	I _v (mcd) max.	V _F (V) min.	V _F (V) typ.	V _F (V) max.		
333-2UTC/S400-A6	5	White	x=0.29,y=0.3	14250	-	28500	2.8	-	3.6	20	15
333-2SUBC/C470/S400-A6	5	Blue	470	1000	2000	-	-	3.4	4.0	20	10
333-2SUGC/S400-A5	5	Brilliant Green	530	4000	8000	-	-	3.4	4.0	20	10
333-2SURC/S400-A8	5	Brilliant Red	624	3200	5000	-	1.7	2.0	2.4	20	10

LED Lamps | 3mm Assembly LED

Product	Dimension (mm)	Color		Brightness			V _F			IF (mA)	Viewing Angle(°)
		Color	Wavelength nm / CIE	I _v (mcd) min.	I _v (mcd) typ.	I _v (mcd) max.	V _F (V) min.	V _F (V) typ.	V _F (V) max.		
A694B/SURSYG/S530-A3	3	Brilliant Red	R:624	R:40	R:80	1.7	2.0	2.4	20	60	
		Brilliant Yellow Green	G:573	G:25	G:50						
A694B/SYGUY/S530-A3	3	Brilliant Yellow Green	SYG:573	SYG:25	SYG:50	1.7	2.0	2.4	20	60	
		Brilliant Yellow	UY:589	UY:40	UY:80						

GERMANY, KARLSRUHE

EVERLIGHT ELECTRONICS EUROPE GMBH
Siemensallee 84, Building 7302, 5F
76187 Karlsruhe, Germany
TEL: +49-721-82447-3
FAX: +49-721-82447-40
EMAIL: info@everlight-eu.de

Maximizing lifecycles with maximum respect for the cycle of life.



ELIDEC2407Q1000V1

Consumer and Communication Home Appliances and Industrial

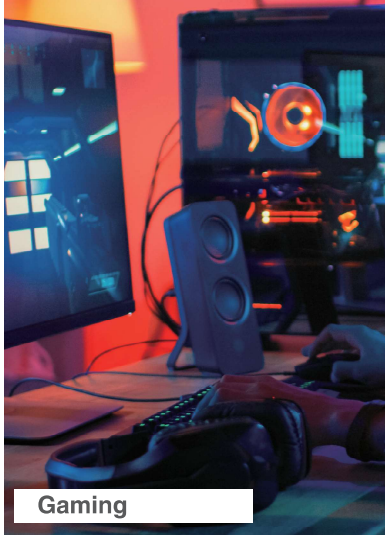
EVERLIGHT provides multiple lines of SMD LEDs for all kinds of applications, including consumer products, home appliances, gaming and industrial.

www.everlight.com

EVERLIGHT

SMD LEDs

Everlight provides versatile kinds of SMD LEDs for your application. Gaming, Home Appliances and Industrial are our strong suit. We have the most compatible package for your need. We have the best team to support your dream.



Gaming



Home Appliances



Industrial

DISPLAY

Display Segment

Featuring direct LED packaging, this indicator light offers a variety of colors and brightness levels.

• Applications : Home appliances and industrial control.



UNIT : mm

Product	Dimension (mm)		Color				CC/CA	Brightness	
	Segment Height mm (inch)	Segment Width mm	Color	Wavelength (nm) / CIE	Resin Color	Face Color		I _v (mcd) min.	I _v (mcd) typ.
S315SURWA/S530-A3	9.14 (0.3")	4.8	● Brilliant Red	624	White	Gray	CC	4.0	8.0
S315SYGWA/S530-E2	9.14 (0.3")	4.8	● Brilliant Yellow Green	573	White	Gray	CC	2.0	3.2

Product	Dimension (mm)		Color				CC/CA	Brightness	
	Segment Height mm (inch)	Segment Width mm	Color	Wavelength (nm) / CIE	Resin Color	Face Color		I _v (mcd) min.	I _v (mcd) typ.
D525SURWA/S530-A3	13.6(0.5)	8	● Brilliant Red	624	White	Gray	CC	7.8	12.5
D525SYGWA/S530-E2	13.6(0.5)	8	● Brilliant Yellow Green	573	White	Gray	CC	2.8	4.5
D525USOWA/S530-A3	13.6(0.5)	8	● Reddish Orange	615	White	Gray	CC	5.6	12.5

Product	Dimension (mm)		Color				CC/CA	Brightness	
	Segment Height mm (inch)	Segment Width mm	Color	Wavelength (nm) / CIE	Resin Color	Face Color		I _v (mcd) min.	I _v (mcd) typ.
F511SURWA/S530-A3	14.22 (0.5")	8.13	● Brilliant Red	624	White	Gray	CC	7.8	15.0
F511SYGWA/S530-E2	14.22 (0.5")	8.13	● Brilliant Yellow Green	573	White	Gray	CC	2.8	6.4
F511SDRWB/S530-A3	14.22 (0.5")	8.13	● Deep Red	639	White	Black	CC	5.6	12.5
F511SURWB/S530-A3	14.22 (0.5")	8.13	● Brilliant Red	624	White	Black	CC	11	24

Product	Size(LxWmm)	Color				CC/CA	Brightness	
		Color	Wavelength (nm) / CIE	Resin Color	Face Color		I _v (mcd) min.	I _v (mcd) typ.
M2881SURWA/S530-A3	60.2x60.2	● Brilliant Red	624	White	Gray	CC	7.8	21.0
M2881SYGWA/S530-E2	60.2x60.2	● Brilliant Yellow Green	573	White	Gray	CC	7.8	17.6
M2881UYWA/S530-A3	60.2x60.2	● Brilliant Yellow	589	White	Gray	CC	11.0	17.6

Product List										
	CSP (Chip Scale Package)			Regular-SMD		SMD-ARGB				
Product Name	CSP0603 (single color)	CSP1005 (single color)	CSP0804 (tri-color)	19F-213 (single color)	67-23 (tri-color)	C5050+IC (full-color)	B3010IC (full-color)	B1818IC (full-color)	B1414ICA (full-color)	B1010ICA (full-color)
Picture										
Package description	CSP top view	CSP top view	CSP top view	SMD-PCB top view	SMD-PLCC top view	SMD-PLCC top view	SMD-PCB side view	SMD-PCB top view	SMD-PCB top view	SMD-PCB top view
Dimension (mm)	0.6*0.3*0.15	1.0*0.5*0.27	0.8x0.45x0.15	1.6*0.8*0.6	3.6*2.7*1.8	5.0*5.0*1.6	3.0*1.5*1.0	1.8*1.8*0.65	1.4*1.4*0.4	1.0*1.0*0.4
Wavelength (nm)	W:0.29-0.29 R:615-630 G:520-540 B:445-460 A:580-600	W:0.32-0.32 R:610-630 G:525-540 B:440-460	R:618-628 G:525-536 B:464-474	R:617.5-633.5 G:520-535 B:464.5-476.5	R:621-631 G:520-530 B:465-475	R:617.5-629.5 G:519.5-531.5 B:464.5-476.5	R:617.5-629.5 G:520-535 B:464.5-476.5	R:617.5-629.5 G:525-540 B:465-475	R:617.5-629.5 G:520-535 B:465-475	R:617.5-629.5 G:525-540 B:465-475
Viewing Angle	120	120	140	120	120	120	120	120	120	120
Brightness (mcd)	R:280-450 G:520-820 B:520-820	R:45-112 G:112-285 B:140-285	R:36-90 YG:45-90 B:45-112	R:45-112 G:112-285 B:140-285	R:112-285 G:180-715 B:72-285	R:90-280 G:280-900 B:71-224	R:180-250 G:600-850 B:70-100	R:285-565 G:900-1800 B:180-360	R:90-180 G:225-450 B:57-112	R:45-112 G:90-225 B:18-45
current IF(mA)	10	20	20	20	20	20	12	20	5	5

Maximizing lifecycles with maximum respect for the cycle of life.



Your source of information : enter www.everlight.com for all advanced EVERLIGHT optoelectronic products and updated specifications. Structure and material depend on customer request.

Maximizing lifecycles with maximum respect for the cycle of life.



Your source of information : enter www.everlight.com for all advanced EVERLIGHT optoelectronic products and updated specifications. Structure and material depend on customer request.