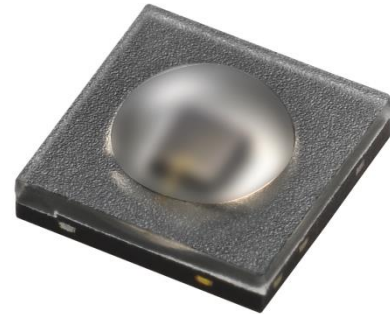


HC-HIR383815C1/L933-150/08T

Everlight HC-HIR383815C1/L933-150/08T is a high-power infrared emitting Diode with 850nm wavelength. This product comes as miniature SMD package which is molded in water clear silicone with spherical top view lens. The EMC Lead frame package allows better power dissipation than ceramic counterparts.



Features

- Small package with high efficiency
- Peak wavelength $\lambda_p = 850 \text{ nm}$
- Soldering methods: SMT
- Pb free
- Compliance with EU REACH
- Compliance Halogen Free (Br < 900ppm, Cl < 900ppm, Br+Cl < 1500ppm)
- The product itself will remain within RoHS compliant version.
- Meet IEC 62471 eye safety test standard.

Applications

- CCD Camera
- Infrared applied Systems
- Eye Tracking

[More information/ContactLink](#)